

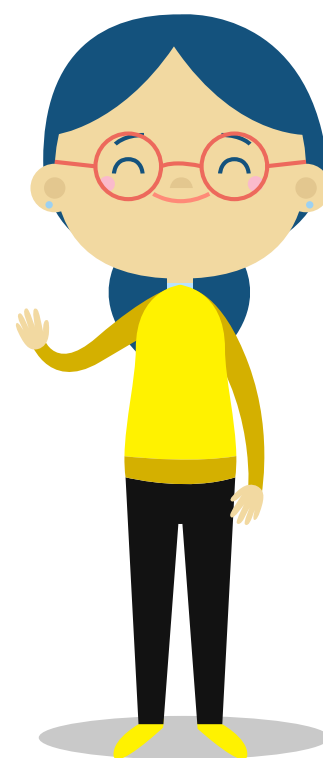
ANNUAL REPORT

2024-2025



TABLE OF CONTENTS

CHAIRPERSON'S REPORT	03
EXECUTIVE DIRECTOR'S REPORT	04
CHILDLINE WESTERN CAPE ANNUAL REPORT 2024 - 2025	05 - 13
SUCCESS STORIES	14 - 16
STAFF REFLECTIONS	17 - 18
LETTER OF THANK YOU FROM PARENT	19
CLIENT'S TERMINATION LETTER	20
CHILDLINE WESTERN CAPE DONOR LIST	21
CHILDLINE WESTERN CAPE FINANCIAL STATEMENTS FOR THE YEAR ENDED 31 MARCH 2024	22 - 38



CHAIRPERSON'S REPORT

Childline Western Cape | 1 April 2024 - 31 March 2025

In a country and province severely impacted by violence and trauma, Childline Western Cape is at the forefront of providing prevention, protection and healing services to children and their families.

South Africa has a Constitutional commitment to protect the rights of children, but it is evident that the country has a long way to go to fulfil this right. In the 2024/25 financial year some 26 852 cases of child abuse and neglect were reported. Cases of sexual abuse remained dominant in all provinces, with 9 859 cases throughout the country. Children who are sexually abused are at increased risk of revictimization in later life and may even become perpetrators. Recent data reveals that 45% of South African households with children reported some form of violence against children between 2021 and 2022. Violence can negatively affect children's health, mental well-being, and social life, making it harder for them to reach their full potential throughout life. It also creates serious economic and social problems, with intergenerational impact.

In 2024, at the Global Ministerial Conference in Colombia, South Africa pledged to, in relation to ending violence against children:

- Parent and caregiver support: Building capacity of parents and caregivers through parenting programmes and ensuring that the home environment is safe for children to help reduce the incidence of child abuse, neglect and exploitation, and stop the use of corporal and physical punishment.
- Safe environments: Creating safety at home, schools and communities, including safety in digital platforms.
- Child participation: Advocacy on children's rights and engaging children in empowerment dialogues.
- Response care, support and healing: Promotion of availability and accessibility of psycho-social support, trauma counselling, and raising awareness about available services.

In this report the reader will find information on the broad range of services offered, which are aligned with the actions outlined above. Our dedicated team of social workers, counsellors and administration staff offer hope to troubled, traumatised children and their caregivers. They have been supported by our board members who volunteer their time, expertise and insights in the field of child protection.

Over the last year Childline Western Cape embarked on a strategic planning process to re-envision the work of the organisation for the next five years. This has been a challenging, yet exciting process, and some of the recommendations have already been operationalised. As an organisation, we could not do this work without the support of our donors, sponsors and project funders. We look forward to continuing our partnership with our donors and sponsors in making a difference to the lives of children and giving them hope for their futures.

Helen Keller once said: "Alone we can do so little; together we can do so much". Thank you to all who support the work of Childline Western Cape – the Childline team, donors, sponsors, board members and volunteers.

References:

1. <https://www.sanews.gov.za/south-africa/2025-child-protection-month-lets-root-out-child-abuse-together>

Mesthrie, S. (2025). Interpreting the Child's Right to Protection from Violence in the South African Context in Line with International Law Obligations. *Journal of Human Rights Practice*, 17(1), 43-57. <https://doi.org/10.1093/jhuman/huae032>

EXECUTIVE DIRECTOR'S REPORT

Childline Western Cape | Financial Year: 1 April 2024 – 31 March 2025

It is my privilege to present the Executive Director's Report for the 2024/2025 financial year. Childline Western Cape continues to serve as a designated non-statutory child protection organisation, committed to safeguarding children and upholding their rights across the province. Our work remains grounded in providing trauma-informed services and advocacy for children who have experienced abuse, neglect, or other violations of their dignity and safety.

This year, our social work and social service professional teams, have witnessed the profound impact of trauma, gender-based violence and bereavement on children, their families and communities. The prevalence of these challenges in the Western Cape highlights the urgency of the services we deliver. These services range from therapeutic interventions, psychosocial support, to prevention and early intervention programmes, as well as our tollfree Helpline, Child Witness Project and Girl Power Project. Every child who walks through our doors, or whom we have contact with, is met with compassion, professionalism and the steadfast belief in their right to support, healing and protection.

At the same time, the broader non-profit sector, including Childline Western Cape, continues to face significant challenges in sourcing sustainable discretionary funding. The demand for our services overtakes the financial resources available. This reality compels us to work harder to ensure that we remain accessible to the thousands of children and families who need us most.

The sustainability of our organisation remains a pressing priority and we are committed to pursuing innovative partnerships and resource mobilisation strategies to secure our future. In addition, we have embarked on an organizational strategic planning process that guides us to align our services with our Mission and Vision, to be mindful of both our internal and external environments and how that impacts the implementation of our services, as well as to strengthen our accountability and transparency to donors, partners and stakeholders.

Despite these challenges, we remain deeply proud of the work carried out by our dedicated staff, volunteers, Board members and friends of Childline Western Cape. None of this would be possible without the generous support of our donor partners and the many networking partnerships of Childline Western Cape, who stand with us in protecting children. Your belief in our mission not only sustains our services but also strengthens our collective resolve to ensure a safer, more nurturing environment for every child in our province.

As we look to the year ahead, we do so with gratitude, hope and determination. We reaffirm our commitment to building a Western Cape where children can grow free from harm and be empowered to reach their full potential. With appreciation,

Ricki Cooper
Executive Director
Childline Western Cape

CHILDLINE WESTERN CAPE ANNUAL REPORT

2024 - 2025

INTRODUCTION

This report gives an overview of the work done by Childline Western Cape in the field of Child Protection, with a focus on Prevention and Early Intervention (PEI). It has been important for us to understand our purpose, to hear from our partners and other stakeholders, and to commit to raising awareness, educating communities, encouraging the reporting of child abuse and supporting victims and their families.

Our services reach the entire Western Cape through our toll-free Helpline on 116, and we serve the greater Cape Metropole through services at various Sexual Offences Magistrate's courts, schools and communities. We cannot do this on our own, and therefore work collaboratively with other stakeholders, being government and non-government organisations, striving to eradicate child abuse. The most prominent forms of abuse that we have seen have been sexual abuse, physical abuse, emotional abuse, deliberate neglect, other traumatic experiences, and family relationships.

A 2022 2023 report by Stats SA showed that the top three reported crimes against children are rape, sexual assault and assault with grievous bodily harm. These crime rates remain persistently high and can have long-lasting effects on the well-being of children, including that of their families and society as a whole.

We have found that trauma is indeed multi-layered and complex, and can start with childhood abuse and ongoing exposure to violence and traumatic experiences. Our work is set out for us, and is guided by South African child legislation, which emphasizes that by prioritising prevention and early intervention, South Africa is aiming to create a child protection system that is proactive, supportive and focused on developing the well-being of all children.

Despite ongoing challenges within communities and many disturbing cases, the organization remains dedicated to supporting vulnerable children, their families, and communities, while also advocating for their safety and healing.



OVERVIEW OF PROGRAMMES:

THE HELPLINE:

The Helpline is a toll-free, 24/7 resource which continues to serve as a critical link for thousands of children and adults, offering accessible, confidential and compassionate support.

During the 2024–2025 reporting period, a total of 18,409 calls were received—highlighting the ongoing demand for child protection, psychosocial support, and reliable access to information.



Types of Helpline Engagements

RESPONSIVE CALLS:

Want-to-talk
Test calls
Cases



4 767

UNRESPONSIVE CALLS:

Silent calls
Hang-ups
Wrong Numbers



13 642

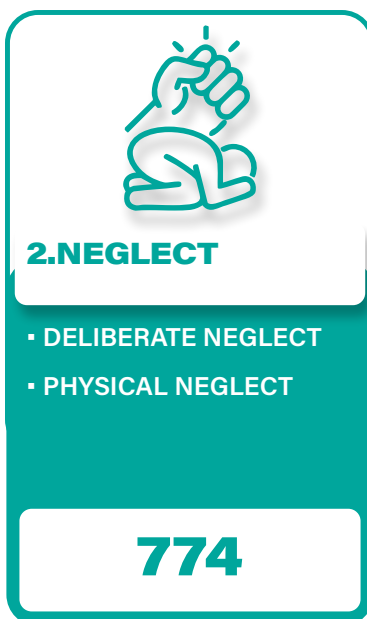
TOTAL : 18 409

Responsive calls reflect real-time emotional distress and/or the need for appropriate responses. These engagements represent meaningful interventions and provide vital relief, safety, and referrals where necessary. Test calls are where children call the Helpline to see if there really is a counsellor on the other end. They might be hesitant, playful, distressed, or simply want to have a conversation with the counsellor about their day, their homework or any other matter that might initially seem irrelevant. For many children, a Test Call represents an important first step. It is an exploratory gesture that reflects growing awareness and a tentative willingness to engage.

These calls offer valuable insight into how children perceive and engage with the Helpline. Our counsellors are trained to respond to these calls in a way that makes each child feel heard and accepted and thereby encouraging further engagement should it be needed. While these moments may seem small, they carry enormous significance as they show that the Helpline is being seen, considered, and trusted.

The Helpline plays a vital role in identifying and intercepting crises before they escalate, and it reinforces a powerful truth.....that early intervention is not just support, it is lifesaving.

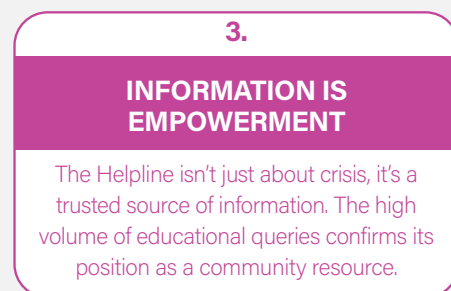
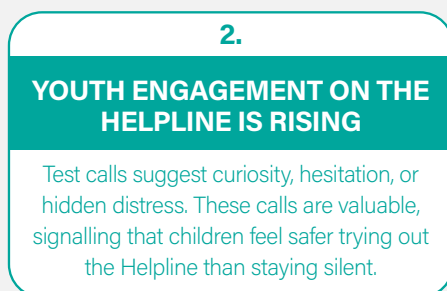
TOP ISSUES RAISED ON THE HELPLINE



These figures serve as a stark reminder that many children continue to experience serious harm within their homes and communities. It also reflects layered vulnerabilities that impact a child's well-being and safety.

We are mindful that these statistics relates only to calls that we received on our Helpline, and does not reflect the overall situation of child protection issues in the Western Cape, which we believe are worse.

Types of Helpline Engagements



Calls for Help on the Rise: Shifting Trends in Helpline Cases

The Helpline experienced a 19.9% increase in formal cases compared to the previous year. This rise signals not only the growing need for our services but also the deepening trust that children, families, and communities place in us as a reliable source of support and protection. We also noted a significant increase in reports received through email and our website's "Contact Us" page. This shift demonstrates that digital channels are becoming essential lifelines, especially for young people who may feel more comfortable reaching out online.

The steady rise in demand underscores the urgent need for sustainable investment. With more children reaching out than ever before, ongoing support from partners and funders is critical to ensure we have the capacity, trained staff, and digital infrastructure to respond effectively. Every contribution directly strengthens the safety net for vulnerable children and helps us remain accessible to those who need us most.

Highlights

The Helpline continues to receive positive feedback from both children and adults. Children have expressed gratitude for the support that we have provided while adults, especially reporters of abuse, commend our calm and compassionate handling of sensitive situations. School visits by the CLWC team have also strengthened children's trust in the Helpline, with many pledging to use the 116 number when needed.

CHILD WITNESS PROJECT

(CWP)

The Child Witness Project is a powerful intervention that aims to make child witnesses and their families feel safe within the justice system. Child witnesses are children who have been raped and sexually assaulted and must appear at court for consultation sessions with the prosecutor, and thereafter they must appear at court to testify.

These children and their caregivers can find a safe and supportive space at our child-friendly waiting rooms, away from the general waiting area of the court. Here they are provided with a light meal, a toy and a place to rest and sleep, because the waiting times at court can sometimes be very long. In addition, our caring Court Support Workers provide warmth and compassion, helping the children and their families to feel comfortable and to allay some of their anxiety.

The CWP is based at five Sexual Offences Courts in the Western Cape, namely Atlantis, Cape Town, Khayelitsha, Paarl and Wynberg. Our Social Workers who are dedicated to this project, provide the necessary therapeutic trauma counselling and support to the children and their caregivers, when necessary.

Accessing the services of the Child Witness Project has allowed child witnesses and their families an opportunity to address their fears and anxiety around the court process and to understand their rights and responsibilities. As a result of this project, many children are able to develop confidence and emotional strength to get through the trial and to testify, which contributes to high successful conviction rates at each court, with Paarl having 95% and Atlantis having 100% successful convictions.



2734

CHILD WITNESSES
ACCESSED OUR CWP AND
RECIEVED A LIGHT MEAL



2323

CHILD WITNESSES
RECIEVED DEBRIEFING



139

CHILD WITNESSES
RECIEVED THERAPEUTIC
COUNSELLING



FACE-TO-FACE TRAUMA

COUNSELLING:

Therapeutic counselling sessions are offered to children who have experienced sexual, physical or emotional trauma. We provide a safe space where children can feel comfortable enough to share their feelings, to develop coping skills and to build their self-esteem so that they can move beyond the trauma and go on to live fulfilled lives. Research indicates that children with untreated trauma can develop negative mental health issues, struggle with relationships, and even develop substance abuse addictions and other bad habits.

We apply a child-centred approach, using appropriate techniques which allows us to understand each child's unique experience and the impact of the trauma on their life. Parents and caregivers are an important part of this process and are included in a way that extends the healing for themselves as well. Our social workers receive ongoing training and supervision to support them through these processes.



411

CHILDREN WERE PROVIDED WITH A PROCESS OF THERAPEUTIC COUNSELLING AND SUPPORT



Group Work:

Group-work is a process of bringing together a group of children who have had a similar experience, over a number of sessions, to discuss, share and reflect. Group work allows children opportunities for social interaction, building relationships with peers, and it fosters a sense of community. It allows for the development of self-awareness and its key purpose is therefore to provide 'insight'.

Children mostly enjoy being in groups and the process can assist in learning valuable life skills.



355

CHILDREN PARTICIPATED IN GROUP WORK PROCESSES



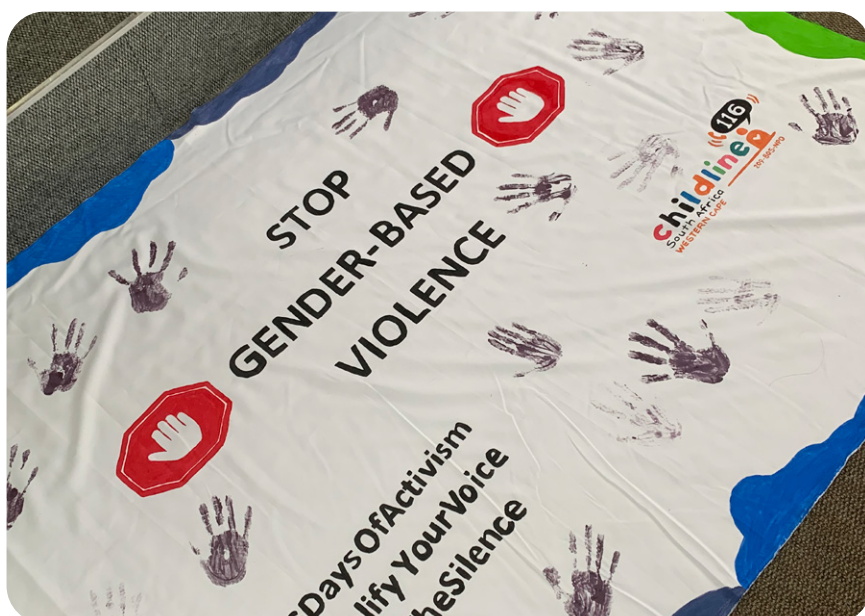
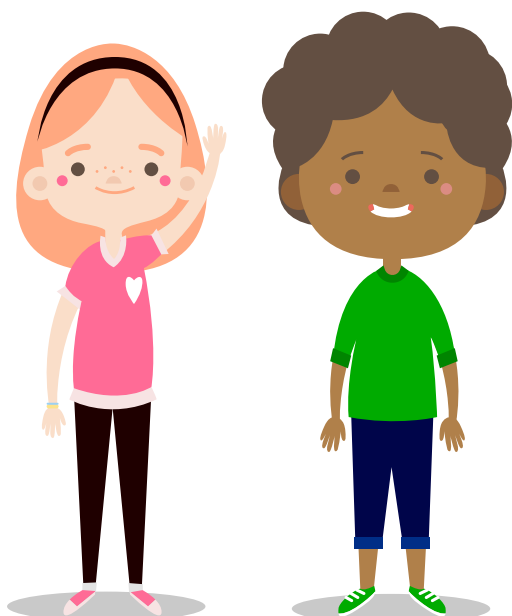
GENDER-BASED VIOLENCE

(GBV) WORKSHOPS:

Since the inception of GBV workshops a few years ago, we have found that adolescents enjoy and appreciate the opportunity to talk about matters which might be uncomfortable to broach without adequate facilitation. GBV is a term often used but not everyone knows or understand what it means, and these interactive engagements provide opportunities to address the definition of GBV, clarifying gender roles, power in relationships and understanding gender identity. It usually generates the sharing of experiences and interesting insights and is a valuable learning opportunity.



ADOLESCENTS PARTICIPATED IN GBV DISCUSSION WORKSHOPS



PREVENTION AND EARLY INTERVENTION

PROGRAMMES:

Prevention and Early Intervention (PEI) programmes are strategies aimed at preventing harm to children, strengthening families and providing support before situations reach the stage of requiring statutory intervention. PEI engagements are conducted with children, youth and adults and take the form of workshops, talks, discussion groups, presentations, holiday club programmes, etc. which are interactive and generate discussions and reflections. These engagements address relevant issues that raise awareness and education about child related matters using age appropriate activities and resources. Each PEI engagement has a critical learning component that is empowering to children and adults.



CHILDREN'S PROGRAMMES:



- Types of abuse and who to tell
- Understanding body boundaries, consent and safety in relationships
- My body, my voice, my power
- Anti-bullying (adolescents and teens)
- Anti-bullying (Primary School)
- Online safety
- GBV Kids
- GBV Teens
- Children's Rights and Responsibilities
- Life skills: self-awareness and self-esteem, identity and peer pressure, relationships and high-risk behaviour, prejudice and discrimination, spirituality
- Ad hoc requests

ADULT'S

PROGRAMMES:

- Signs and symptoms of child abuse, dealing with disclosures and reporting procedures
- Protecting children in schools
- Positive Parenting
- Positive discipline in the school context
- Understanding and responding to Harmful Sexual Behaviours in schools
- GBV for parents, guardians and educators
- Ad hoc requests relating to children's issues



7053

CHILDREN PARTICIPATED IN PEI ACTIVITIES

1283

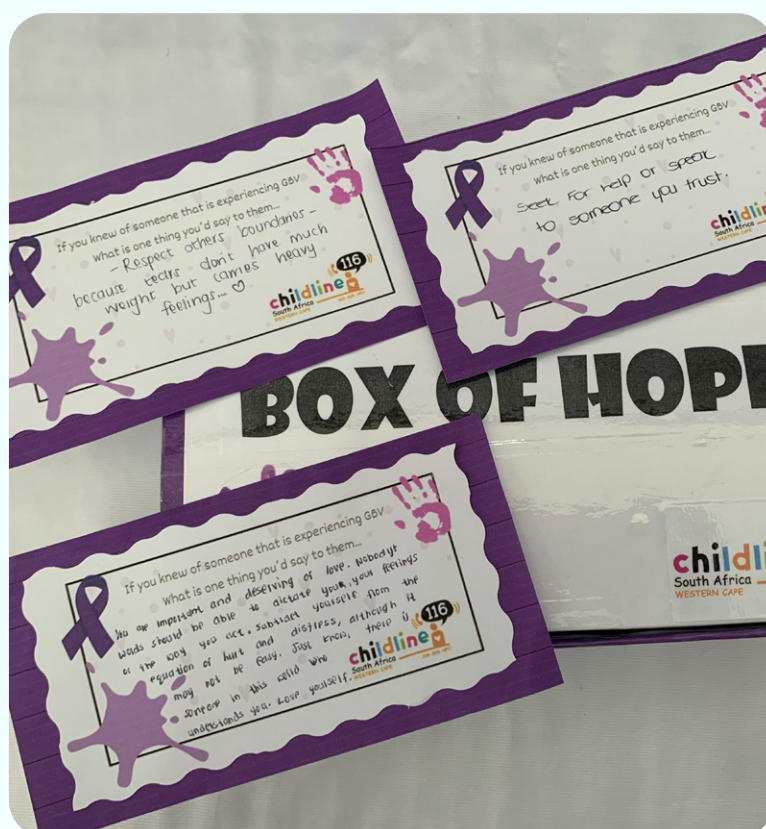
COMMUNITY MEMBERS AND PARENTS PARTICIPATED IN PEI PROGRAMMES

SAFETY QUESTIONNAIRES:

Safety Questionnaires are conducted at schools with our Prevention and Early Intervention programmes. These questionnaires allow us to identify children who may be experiencing some kind of abuse and are therefore in need of care and support. We ensure that the necessary type of intervention is provided either through our services or that of a statutory organization, depending on the need of the child. It is an opportunity for children to reach out to us in a safe environment.

1253

CHILDREN WERE ASSESSED THROUGH SAFETY QUESTIONNAIRES



GIRL POWER PROJECT (GPP):

The Girl Power Project focuses on addressing issues of Gender-Based Violence in Delft. It is an intensive programme conducted in four schools, working alongside learners, school staff and parents and takes the form of group work processes, discussions and capacity building sessions. The aimed outcomes are to:



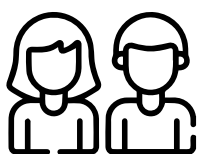
- Decrease the acceptance of violence against children and women in communities
- Increase the reporting of violence and corporal punishment of children and in schools and communities
- Improve access to social and statutory and services
- Increase the capacity and accountability of duty bearers to appropriately respond to violence

We are active participants of the Delft Child Protection Forum and have established working relationships with community members, government and non-government organisations in Delft to promote child protection issues there.

The Girl Power Project is funded by the Nelson Mandela Children's Fund, and we have been privileged to also be part of their Boy Joy Summit, the South African Pre-Summit of the Africa Children's Summit and the Africa Children's Summit. We sent a delegation of children from Delft to attend each of these Summit events that were held in Johannesburg, accompanied by our Girl Power Social Auxiliary Worker. These exciting events had a profound impact on the learners who attended, and will forever be a memory of personal growth and development.



Stats:



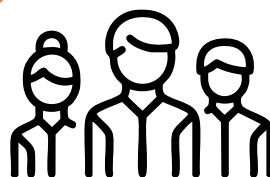
4365

Learners participated
in PEI workshops



216

Learners participated
in group Work
processes



135

School staff
participated in GBV
workshops



143

Parents and caregivers
participated in
GBV and parenting
workshops

ADMIN DEPARTMENT ANNUAL REPORT 2025

In South Africa, social workers play a vital role in child protection, working to prevent abuse and neglect through preventative services, early intervention, and statutory intervention, as outlined in the Children's Act and the South African Constitution. The Administration Department provides critical support to ensure the smooth operation of the organization, establishing the necessary infrastructure for social workers to effectively deliver their essential services to communities in the Western Cape.

The past financial year began on a high note, marked by the successful transfer of the Wynberg properties into the name of Childline Western Cape. This milestone sparked a flurry of activity within the Administration Department, focusing on necessary upgrades and maintenance to enhance the facilities.

Significant progress has been made in achieving our short-term goals, and we extend our sincere thanks and appreciation to companies such as Nexacore, CT Fire, Watertite Guttering, funders, donors and those whose generous contributions of time and resources have made a meaningful impact in the lives of children.

However, like many other child protection organizations in South Africa, non-profit organizations face considerable financial challenges due to rising operational costs. We appeal to corporations, small businesses, and the broader community to support us in any way possible, ensuring that Childline Western Cape continues to provide crucial services to vulnerable children who lack access to essential support and interventions.

A heartfelt thank you goes out to our dedicated Board, Management team, Social workers, Administrative staff, external Consultants, and support personnel. Your unwavering commitment and hard work collectively make this organization the outstanding institution that it is today.



SUCCESS STORIES

Success Story 1

A teenage boy contacted the Helpline expressing anxiety about starting Grade 8. He felt intimidated by his peers and struggled with low self-esteem, despite consistently being praised for his academic performance. He shared that class participation often left him feeling “dumb,” especially when he gave incorrect answers, which further eroded his confidence. Through gentle conversation, the counsellor uncovered that past trauma—witnessing domestic violence—continued to affect his emotional well-being. Therapeutic support was suggested, but the boy declined, saying that living with his grandparents had helped him cope. He was encouraged to reach out again if he reconsidered in the future.

By the end of the call, he felt more at ease and asked for help with preparing an oral presentation. He expressed sincere gratitude for the Helpline, calling it the only space where he felt safe to speak openly. He was reassured of continued support whenever needed.

Success story 2

A teenage boy contacted the Helpline expressing suicidal thoughts. He was given a safe space to share his experiences and disclosed a traumatic incident involving an adult who, under false pretences, attempted to sexually abuse him. He managed to escape unharmed but has since felt anxious and fearful.

The counsellor validated his feelings, explained the importance of reporting the incident, and encouraged him to speak to a trusted adult when ready. He was reassured that he could report through Childline if preferred and was given safety tips for the future. The caller expressed gratitude for the support, noting that he had contacted Childline before and deeply valued the consistent, trusted help provided during times of need.

Success story 3

I had a 12-year-old client who was referred for sexual abuse. She had experienced sexual harassment at school and initially struggled to cope. She was quiet and withdrawn but as our sessions progressed, she became lively, cheerful, and expressive about her needs. She demonstrated the ability to use her coping skills effectively and shared how the therapeutic process had positively impacted her. She was in her final year of Primary school, and expressed excitement about starting High school and taking with her the skills she had developed during our sessions, which was an indication that she viewed her future as being promising and saw herself fitting into it with confidence.



Success story 4

During a recent visit to Joe Slovo High School, we were approached by a group of Grade 12 learners who expressed a desire to form a Gender-Based Violence (GBV) awareness group. The learners, primarily boys, shared their interest in understanding how to better treat girls and foster respectful relationships in their school. The necessary arrangements were made and the learners themselves demonstrating leadership and initiative by recruiting additional members (boys and girls) to participate in the group.

The group sessions were lively and interesting, with trending topics of discussion around power dynamics in relationships. The learners found the information about gender identity and equality particularly eye-opening, with one group member expressing that the insights gained were so meaningful that he planned to share them with his peers at school, at home and in his community. This voluntary and learner-driven effort reflects a growing awareness and commitment amongst youth to challenge harmful norms and promote gender equality in their communities.

Success story 5

A 15-year-old male was referred to us after he had attempted suicide because he was being continually bullied at school. He had been hospitalized for six months, and upon discharge, refused to return to school or to engage in support services, expressing frustration with repeatedly discussing the incident.

His mother attended an intake session at our office, where the counselling process was explained. She went home and shared this with her son, and after initial resistance, he eventually agreed to attend a counselling session. He was withdrawn at the beginning, but after the process and benefits of counselling were explained to him, he agreed to give it a try. Since then, this client has been attending sessions and actively participating and has since shared that he is glad that he gave it a chance, finding that it was more helpful than he had expected. His mother has also reported noticeable improvements in his behaviour and emotional state.



STAFF REFLECTIONS

In a world where children encounter unimaginable challenges, social workers serve as unwavering advocates. They ensure that children are protected, their rights are upheld, and their futures remain hopeful. In my role as a social worker at Childline Western Cape, I have created safe spaces for children, empowering them to live without fear and encouraging them to thrive with hope.

Kauthar Stemmet, Social Worker

Since I joined Childline, I have been empowered to explore new skills, to learn and to grow. The organization has allowed me to tap into my potential, be myself, and discover hidden strengths. I have absorbed new experiences which brought out aspects of myself that I was not aware of, leading to personal and professional growth.

I started as a Helpline telephone counsellor, where I provided emotional support to children and young people. Later, I transitioned to an Administrator's role.

As an Admin, my responsibilities have included offering support to the team and aiding in resource development.

I am committed to continuing to make a positive difference in the lives of children and to the organization at large.

I am forever grateful to Childline for the opportunity to make a meaningful difference both within the organization and in the lives of the children we serve.

Asemahle Nxito, Social Auxiliary Worker

For the past four years, I've been dedicated to child protection, making a meaningful impact in the lives of vulnerable children and families. This work has not only allowed me to contribute to their safety and well-being but has also given me a deep sense of purpose and fulfilment.

In my roles as a Social Auxiliary Worker and Referral Officer on the Helpline, I've developed valuable skills in communication, empathy, problem-solving, and teamwork. Each challenge has helped to shape me into a resilient, resourceful professional.

My time at Childline Western Cape has been especially transformative. On the Helpline, I've supported children and parents through moments of crisis—situations that demand calm, quick thinking, and genuine compassion. One call that stands out for me was from a 15-year-old girl experiencing a severe anxiety attack. I helped her to calm down through breathing exercises, listened with empathy, and gently guided her toward healthy coping strategies. Her gratitude reminded me of how powerful a single conversation can be.

Every day in this field reinforces the importance of early intervention, advocacy, and ongoing support for children at risk.

Carynn-Lisa Fredericks, Social Auxiliary Worker



STAFF REFLECTIONS

Working at Childline has been one of the most transformative experiences of my life. Starting with the Child Witness Programme, I gained deep insight into the courage and resilience of children. As I transitioned into the role of Office Administrator, I grew both professionally and personally, learning the importance of structure, support, and teamwork in driving a cause forward. Now, being part of the Girl Power Project (Nelson Mandela Children's Fund) —engaging directly with communities and co-facilitating group work—has reignited my passion. It's exciting, humbling, and truly fulfilling to be part of something that brings real change in people's lives. This journey has been more than just a job; it has been an education, a calling, and a privilege.

Rose Zigana, Social Auxiliary Worker

Working with traumatized children can be emotionally challenging, but the reward of making a positive impact on their lives is what motivates me to get up every day and go to work. Being part of Childline has not only allowed me to make a meaningful difference, but it has also opened doors for personal and professional growth. Through various trainings and exposure to diverse projects within the organization, I've been able to expand my skills and deepen my understanding of child protection. It's truly a life-changing experience—one that nurtures both professional development and the opportunity to support and uplift children and families.

Brenda Nyamatana, Social Auxiliary Worker

Being in the field of Child Protection is a transformative and deeply humbling journey. Each child and family I work with teaches me something new, as every case is unique and carries its own story. It is fulfilling to know that I am making a difference in the lives of children and supporting families who play a vital role in shaping strong, resilient communities.

Nontethelelo Gumede, Social Worker



LETTER OF THANK YOU FROM PARENT

A letter from a mother whose son Josh (not his real name) received trauma counselling from a Childline social worker.

Dear Ms. Lizanne

I hope that this e-mail finds you well, I just want to express my deepest gratitude as Josh's mother on how the therapy sessions has help and improved Josh's life as a whole. Before he started with counselling with you (Childline), I was really terrified that my son will take his life, commit suicide as he did not talk to anyone. I, as his mother did not have the tools on how to deal with the situation. It felt like fighting a losing battle as I blamed myself for what has happened to Josh. Because of my trust in people that I had no business trusting. And from that place I did not know how to engage in a conversation where my son could express his feelings and emotions. I literally had nightmares that my son hanged himself in a big tree in our backyard.

During counselling every Monday at first I was scared therapy will do more harm than good but after the 3rd session I saw Josh smile after the session and remembered that my son has always been emotional after talking about his traumatic experience. I saw how his confidence grew after each session, even the way he would sit and walk, it was with a new-found confidence.

And as a mother who once thought that her son would be permanently scarred emotionally, now I saw that there is hope and the ability to move pass the trauma was something that was out of reach before the counselling sessions. Josh could now communicate what he is feeling and has the courage to say no if he doesn't like or agree with something.

The therapy has helped my son not to become anti-social, he is able to interact and engage with his peers like a normal teenager. Before Josh was very emotional as I said that I feared for the worse. Myself and Josh had a real healing and self-improvement journey with Childline.

I am grateful that I was open to take the risk and chance to allow Childline to be part of our healing journey, as I always thought that going through these types of counselling means that you are a failure and part of a system that is broken. But it has only built my trust in the judicial system.

Thank you for all the effort and support that you have given us as a family, to move forward with dreams and goals for our lives again.

Kind Regards

Josh's mother

CLIENT'S TERMINATION LETTER

Dear Kautlar

The first time I came here I was nervous and unsure about doing this, because I didn't want someone to be asking me about my feelings and all that mushy stuff. But ever since I came here it's been great I loved having someone to talk to about my feelings and to ask how I was and helping me to cope whatever with what was happening in my life, that someone was you! Thank you so much for being there, for encouraging me and me, for encouraging me and showing me that you really care about how I feel and not just pretending. When ever I come here you're always smiling and that lifts me up. You are an angel sent from heaven, Thank you so much for everything.



Childline Western Cape Donor list

Annual Report 2024 – 2025

State funding

Department of Social Development

Organisations

Childline South Africa

Kapditwala Business

Mason Complete Office Solutions

Corporate Social Investment

Grand Slots CSI

Investec

Trusts and Foundations

David Graaff Foundation

Diane Kaplan Charity Trust

E R Tonnessen Trust

J E T Lee Will Trust

Joan St Leger Lindbergh Charitable Trust

Kurt and Joey Strauss Foundation

Lorenzo & Stella Chaippini Trust

MAID Foundation

Nelson Mandela Children's Fund

Rolf-Stephan Nussbaum Foundation

Miscellaneous Donations

The Union of Jewish Women, Constantia Group

Cape Town Fire Maintenance Services

Link-Up Communications (PTY) LTD

Shoprite Checkers (Western Cape HO)

McIntyre SPAR & TOPS (Parow)

Varsity College Students

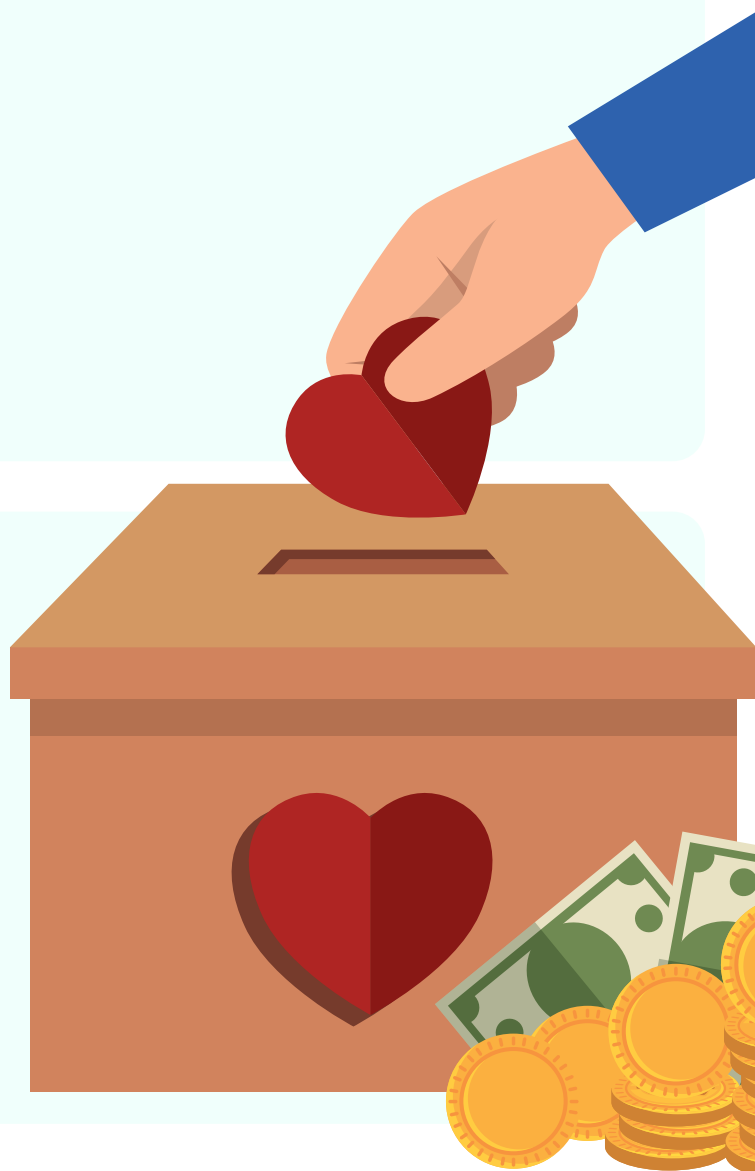
Patricia Mayers

Nexacore

Newtech Recycling

Fuad Dollie

Brent van der Linde



**CHILDLINE WESTERN CAPE
FINANCIAL STATEMENTS
FOR THE YEAR ENDED 31 MARCH 2025**



**CHILDLINE WESTERN CAPE
FINANCIAL STATEMENTS FOR THE YEAR ENDED 31 MARCH 2025**

GENERAL INFORMATION

NPO REGISTRATION NUMBER	209-805 NPO
PUBLIC BENEFIT ORGANISATION NUMBER	930063981
BOARD MEMBERS	P M Mayers (Chairperson) R J Cooper (Executive Director) C A Brown M L Minnaar-McDonald N V Titi
BUSINESS ADDRESS	38 Fleming Road Wynberg 7800
AUDITOR	Nexia Cape Town Registered Auditors 903361E
LEVEL OF ASSURANCE	Audit

CHILDLINE WESTERN CAPE FINANCIAL STATEMENTS FOR THE YEAR ENDED 31 MARCH 2025

The reports and statements set out below comprise the financial statements presented to the members:

CONTENTS	PAGE
Board Members' Responsibilities and Approval	3
Board Members' Report	4
Independent Auditor's Report	5 - 6
Statement of Financial Position	7
Statement of Comprehensive Income	8
Statement of Cash Flows	9
Accounting Policies	10 - 11
Notes to the Financial Statements	12 - 15
The following supplementary information does not form part of the financial statements and is presented as additional information:	
Major Donations	16

CHILDLINE WESTERN CAPE FINANCIAL STATEMENTS FOR THE YEAR ENDED 31 MARCH 2025

BOARD MEMBERS' RESPONSIBILITIES AND APPROVAL

The board members are required to maintain adequate accounting records and are responsible for the content and integrity of the financial statements and related financial information included in this report. It is the board members' responsibility to ensure that the financial statements fairly present the state of affairs of the organisation as at the end of the financial year and the results of its operations and cash flows for the period then ended, in conformity with the accounting policies as set out in the financial statements. The external auditor is engaged to express an independent opinion on the financial statements.

The financial statements are prepared in accordance with the accounting policies as set out in the financial statements which have been applied and supported by reasonable and prudent judgements and estimates.

The board members are also responsible for the system of internal financial control. These are designed to provide reasonable, but not absolute, assurance as to the reliability of the financial statements, and to adequately safeguard, verify and maintain accountability of assets and to prevent and detect misstatements and loss. Nothing has come to the board members' attention to indicate that any breakdown in the functioning of these controls, procedures and system has occurred during the period under review.

The board members are satisfied that the organisation has access to adequate resources to continue in operational existence for the foreseeable future.

The external auditor is responsible for independently auditing and reporting on the organisation's financial statements. The financial statements have been examined by the organisation's external auditor whose report is presented on pages 5 to 6.

The financial statements and supplementary information set out on pages 7 to 16, which have been prepared on the going concern basis, were approved by the board members and were signed on their behalf by:



P M Mayers (Chairperson)



R J Cooper (Executive Director)

Cape Town

23 July 2025

CHILDLINE WESTERN CAPE
FINANCIAL STATEMENTS FOR THE YEAR ENDED 31 MARCH 2025
BOARD MEMBERS' REPORT

The board members have pleasure in submitting their report on the financial statements of Childline Western Cape for the year ended 31 March 2025.

1. NATURE OF BUSINESS

Childline Western Cape was established in South Africa to assist children and adults with regard to child related issues.

2. REVIEW OF FINANCIAL RESULTS AND ACTIVITIES

The financial statements have been prepared in accordance with entity specific basis of accounting as described in the accounting policies as set out in the financial statements.

Full details of the financial position, comprehensive income and cash flows of the organisation are set out in these financial statements.

3. EVENTS AFTER THE REPORTING PERIOD

The directors are not aware of any material events which occurred after the reporting date and up to the date of this report.

4. GOING CONCERN

The organisation receives state funding from the Department of Social Development and is a beneficiary to 9 Trusts within South Africa. We are confident that the organisation is a going concern and will remain one in the year ahead.

The organisation has adequate financial resources to continue in operation for the foreseeable future and accordingly the financial statements have been prepared on a going concern basis. The board members have satisfied themselves that the organisation is in a sound financial position and that it has access to sufficient cash resources to meet its foreseeable cash requirements. The board members are not aware of any material change that may adversely impact the organisation. The board members are also not aware of any material non-compliance with statutory or regulatory requirements or of any pending changes to legislation which may affect the organisation.

INDEPENDENT AUDITOR'S REPORT

TO THE MEMBERS OF CHILDLINE WESTERN CAPE

Qualified opinion

We have audited the financial statements of Childline Western Cape set out on pages 7 to 15, which comprise the statement of financial position as at 31 March 2025, the statement of comprehensive income, and the statement of cash flows for the year ended, and the notes to the financial statements, including a summary of significant accounting policies.

In our opinion, except for the possible effect of the matter described in the basis for qualified opinion section of our report, the financial statements present fairly, in all material respects, the financial position of Childline Western Cape as at 31 March 2024, and its financial performance and cash flows for the year then ended in accordance with the accounting policies as set in the financial statements.

Basis for qualified opinion

In common with similar organisations, it is not feasible for the organisation to institute accounting controls over cash receipts prior to the initial entry of the receipts in the accounting records. Accordingly, it was impracticable for us to extend our examination beyond the receipts actually recorded.

We conducted our audit in accordance with International Standards on Auditing. Our responsibilities under those standards are further described in the Auditor's responsibilities for the audit of the financial statements section of our report. We are independent of the organisation in accordance with the Independent Regulatory Board for Auditors' Code of Professional Conduct for Registered Auditors (IRBA Code) and other independence requirements applicable to performing audits of financial statements in South Africa. We have fulfilled our other ethical responsibilities in accordance with the IRBA Code and in accordance with other ethical requirements applicable to performing audits in South Africa. The IRBA Code is consistent with the corresponding sections of the International Ethics Standards Board for Accountants' International Code of Ethics for Professional Accountants (including International Independence Standards). We believe that the audit evidence we have obtained is sufficient and appropriate to provide a basis for our qualified opinion.

Emphasis of matter

The financial statements are prepared in accordance with the organisation's own accounting policies to satisfy the needs of the organisation. As a result, the financial statements may not be suitable for another purpose. Our opinion is not modified in respect of this matter.

Other information

The board members are responsible for the other information. The other information comprises the information included in the document titled "Childline Western Cape financial statements for the year ended 31 March 2025", which includes the board members' report, the board members' responsibilities and approval report and supplementary information set out on page 16. The other information does not include the financial statements and our auditor's report thereon.

Our opinion on the financial statements does not cover the other information and we do not express an audit opinion or any form of assurance conclusion thereon.

In connection with our audit of the financial statements, our responsibility is to read the other information and, in doing so, consider whether the other information is materially inconsistent with the financial statements or our knowledge obtained in the audit, or otherwise appears to be materially misstated. If, based on the work we have performed, we conclude that there is a material misstatement of this other information, we are required to report that fact. We have nothing to report in this regard.

INDEPENDENT AUDITOR'S REPORT

Responsibilities of the board members for the financial statements

The board members are responsible for the preparation and fair presentation of the financial statements in accordance with the accounting policies set out in the financial statements, and for such internal control as the board members determine is necessary to enable the preparation of the financial statements that are free from material misstatement, whether due to fraud or error.

In preparing the financial statements, the board members are responsible for assessing the organisation's ability to continue as a going concern, disclosing, as applicable, matters related to going concern and using the going concern basis of accounting unless the board members either intend to liquidate the organisation or to cease operations, or have no realistic alternative but to do so.

Auditor's responsibilities for the audit of the financial statements

Our objectives are to obtain reasonable assurance about whether the financial statements as a whole are free from material misstatement, whether due to fraud or error, and to issue an auditor's report that includes our opinion. Reasonable assurance is a high level of assurance, but is not a guarantee that an audit conducted in accordance with International Standards on Auditing will always detect a material misstatement when it exists. Misstatements can arise from fraud or error and are considered material if, individually or in the aggregate, they could reasonably be expected to influence the economic decisions of users taken on the basis of these financial statements.

As part of an audit in accordance with International Standards on Auditing, we exercise professional judgement and maintain professional scepticism throughout the audit. We also:

- Identify and assess the risks of material misstatement of the financial statements, whether due to fraud or error, design and perform audit procedures responsive to those risks and obtain audit evidence that is sufficient and appropriate to provide a basis for our opinion. The risk of not detecting a material misstatement resulting from fraud is higher than for one resulting from error, as fraud may involve collusion, forgery, intentional omissions, misrepresentations, or the override of internal control.
- Obtain an understanding of internal control relevant to the audit in order to design audit procedures that are appropriate in the circumstances, but not for the purpose of expressing an opinion on the effectiveness of the organisations's internal control.
- Evaluate the appropriateness of accounting policies used and the reasonableness of accounting estimates and related disclosures made by the board.
- Conclude on the appropriateness of the board's use of the going concern basis of accounting and based on the audit evidence obtained, whether a material uncertainty exists related to events or conditions that may cast significant doubt on the organisation's ability to continue as a going concern. If we conclude that a material uncertainty exists, we are required to draw attention in our auditor's report to the related disclosures in the financial statements or, if such disclosures are inadequate, to modify our opinion. Our conclusions are based on the audit evidence obtained up to the date of our auditor's report. However, future events or conditions may cause the organisation to cease to continue as a going concern.
- Evaluate the overall presentation, structure and content of the financial statements, including the disclosures, and whether the financial statements represent the underlying transactions and events in a manner that achieves fair presentation.

We communicate with the board regarding, among other matters, the planned scope and timing of the audit and significant audit findings, including any significant deficiencies in internal control that we identify during our audit.

Nexia Cape Town

Nexia Cape Town

Per Claudette February
Partner
Registered Auditor

Cape Town
23 July 2025

**CHILDLINE WESTERN CAPE
FINANCIAL STATEMENTS FOR THE YEAR ENDED 31 MARCH 2025**

STATEMENT OF FINANCIAL POSITION

Figures in Rand	Note	2025	2024
ASSETS			
Non-Current Assets			
Property, plant and equipment	2	1 944 510	1 998 270
Current Assets			
Trade and other receivables	3	93 218	105 275
Cash and cash equivalents	4	1 891 446	2 414 454
		1 984 664	2 519 729
Total Assets		3 929 174	4 517 999
EQUITY AND LIABILITIES			
EQUITY			
Accumulated funds		1 429 197	1 822 416
Sustainability funds	5	97 664	97 664
Separation reserve funds	6	1 789 387	1 802 631
		3 316 248	3 722 711
LIABILITIES			
Current Liabilities			
Trade and other payables	7	74 596	48 486
Project funds received in advance	8	538 330	746 802
		612 926	795 288
Total Equity and Liabilities		3 929 174	4 517 999

**CHILDLINE WESTERN CAPE
FINANCIAL STATEMENTS FOR THE YEAR ENDED 31 MARCH 2025**

STATEMENT OF COMPREHENSIVE INCOME

Figures in Rand	Note	2025	2024
REVENUE			
Government grants		6 728 853	6 787 100
Donations and bequests		1 574 033	1 095 976
		8 302 886	7 883 076
OPERATING EXPENSES			
Advertising		39 124	43 465
Bank charges		23 489	23 524
Cleaning		70 912	65 894
Computer cost		11 314	23 360
Consulting and professional fees		309 713	253 742
Depreciation		53 816	31 287
Employee costs		6 674 790	6 073 747
Fundraising costs		370 000	-
Insurance		73 339	77 958
Lease rentals on operating lease		388 669	386 290
Meetings		137 700	76 369
Municipal charges		105 437	94 493
Other funder specific costs		135 063	129 904
Printing and stationery		88 179	60 419
Repairs and maintenance		70 609	170 406
Security		12 019	18 884
Staff welfare		26 001	8 593
Telephone and internet		65 850	87 840
Training and staff development		72 313	61 687
Travel - local		168 132	101 775
		(8 896 469)	(7 789 637)
Operating (deficit) surplus		(593 583)	93 439
Interest received		200 364	228 368
(Deficit) surplus for the year		(393 219)	321 807

CHILDLINE WESTERN CAPE
FINANCIAL STATEMENTS FOR THE YEAR ENDED 31 MARCH 2025

STATEMENT OF CASH FLOWS

Figures in Rand	Note	2025	2024
CASH FLOWS FROM OPERATING ACTIVITIES			
Cash (used in) generated from operations	10	(710 072)	110 831
CASH FLOWS FROM INVESTING ACTIVITIES			
Purchase of property, plant and equipment	2	(13 300)	(173 587)
Other financial assets advanced		-	441
Interest received		200 364	228 368
		187 064	55 222
CASH FLOWS FROM FINANCING ACTIVITIES			
Funds released from sustainability reserve		-	(96 336)
Total cash movement for the year		(523 008)	69 717
Cash and cash equivalents at the beginning of the year		2 414 454	2 344 737
Total cash and cash equivalents at end of the year	4	1 891 446	2 414 454

CHILDLINE WESTERN CAPE FINANCIAL STATEMENTS FOR THE YEAR ENDED 31 MARCH 2025

ACCOUNTING POLICIES

1. Presentation of financial statements

The financial statements have been prepared in accordance with the entity specific basis of accounting on a going concern basis as set out below. The financial statements have been prepared on the historical cost basis. They are presented in South African Rands.

These accounting policies are consistent with the previous period.

1.1 Property, plant and equipment

Land is measured at historical cost and are not subject to depreciation or revaluation.

Buildings, plant and equipment is carried at cost less accumulated depreciation and any accumulated impairment.

Depreciation is provided using the straight-line method to write down the cost, over the useful life of the property, plant and equipment as follows:

Item	Average useful life
Buildings	50 years
Computer equipment	3 years
Motor vehicles	12 years
Solar equipment	7 years

Depreciation on the buildings and motor vehicle capitalised through the separation agreement will be raised to the separation reserve fund, all other depreciation will be recognised in profit or loss.

1.2 Trade and other receivables

Trade and other receivables are initially measured at transaction price and subsequently measured at amortised cost, using the effective interest rate method. Appropriate allowances for estimates irrecoverable amounts are recognised in profit or loss when there is objective evidence that the asset is impaired.

1.3 Cash and cash equivalents

Cash and cash equivalents comprise cash on hand and demand deposits, and other short-term highly liquid investments that are readily convertible to a known amount of cash and are subject to an insignificant risk of significant changes in value.

1.4 Accumulated funds

Accumulated funds, are funds available for future distributions accumulated from discretionary funds not spent in the previous financial year.

1.5 Separation reserve fund

Separation reserve fund comprises the assets capitalised in terms of the separation agreement between Childline Western Cape and Lifeline Western Cape.

1.6 Trade and other payables

Trade and other payables are initially measured at transaction price and are subsequently measured at amortised cost, using the effective interest rate method. Trade and other payables of short-term nature are not discounted.

1.7 Financial liabilities

Financial liabilities are initially measured at transaction price and are subsequently measured at amortised cost, using the effective interest rate method.

CHILDLINE WESTERN CAPE FINANCIAL STATEMENTS FOR THE YEAR ENDED 31 MARCH 2025

ACCOUNTING POLICIES

1.8 Project funds received in advance

Project funds received in advance are recognised initially at the transaction price. Project funds are funds received from donors to fund designated projects. Income is recognised only when the funds are used and expensed in the income statement. The balance of the unused funds are then allocated to the project funds in advanced on the balance sheet. The interest earned on these amounts are recognised in bank and interest income and not added to the funds in advance.

1.9 Revenue

Revenue comprises monies received from fundraising activities, funding received from specific project including funds received from the state for outreach and related programmes, and monies received from counselling services provided.

Monies received from fund raising activities includes donations and grants received, these are recognised on receipt or when the right to receive payment has been established.

Funding received for specific projects and outreach programmes are recognised as income only to the extent that expenditure has been incurred.

Monies received from counselling services provided are recognised on receipt or when the right to receive payments is established.

Donations of property, plant and equipment are recognised as income on receipt of the asset at an amount equivalent to the cost had the asset been acquired in accordance with an arm's length transaction. Other donations in kind are accounted for upon receipt of the funds.

Project funds received for contractual specific expenditure is recognised once the expense has been incurred in the income statement. Funds received for discretionary purposes are recognised on receipt.

1.10 Other income

Interest is recognised using the effective interest rate method.

1.11 Leases

Operating leases – lessee

Operating lease payments are recognised as an expense in line with the lease agreement.

1.12 Employee benefits

Short-term employee benefits

The cost of short-term employee benefits is recognised in the period in which the service is rendered and is not discounted.

**CHILDLINE WESTERN CAPE
FINANCIAL STATEMENTS FOR THE YEAR ENDED 31 MARCH 2025**

NOTES TO THE FINANCIAL STATEMENTS

Figures in Rand	2025	2024
------------------------	-------------	-------------

2. PROPERTY, PLANT AND EQUIPMENT

	2025			2024		
	Cost	Accumulated depreciation	Carrying value	Cost	Accumulated depreciation	Carrying value
Computer equipment	156 125	(105 648)	50 477	142 825	(69 273)	73 552
Land and buildings	1 715 437	-	1 715 437	1 715 437	-	1 715 437
Motor vehicles	158 930	(84 980)	73 950	158 930	(71 736)	87 194
Solar equipment	122 087	(17 441)	104 646	122 087	-	122 087
Total	2 152 579	(208 069)	1 944 510	2 139 279	(141 009)	1 998 270

Reconciliation of property, plant and equipment - 2025

	Opening balance	Additions	Other	Depreciation	Closing balance
Computer equipment	73 552	13 300	-	(36 375)	50 477
Land and buildings	1 715 437	-	-	-	1 715 437
Motor vehicles	87 194	-	(13 244)	-	73 950
Solar equipment	122 087	-	-	(17 441)	104 646
	1 998 270	13 300	(13 244)	(53 816)	1 944 510

Reconciliation of property, plant and equipment - 2024

	Opening balance	Additions	Other	Depreciation	Closing balance
Computer equipment	53 339	51 500	-	(31 287)	73 552
Land and buildings	1 715 437	-	-	-	1 715 437
Motor vehicles	100 438	-	(13 244)	-	87 194
Solar equipment	-	122 087	-	-	122 087
	1 869 214	173 587	(13 244)	(31 287)	1 998 270

Details of properties

Wynberg Counselling centre, including offices situated at 36 Fleming Road, being Erf no. 142738 situated in the municipality of Wynberg. Donated 31 March 2023	<u>1 391 629</u>	<u>1 391 629</u>
Wynberg Counselling centre, including offices situated at 38 Fleming Road, being Erf no. 142739 situated in the municipality of Wynberg. Donated 31 March 2023	<u>323 808</u>	<u>323 808</u>

Land and building, along with motor vehicles, have been accounted for in the financial statements via the separation reserve fund. The assets have been recognised on the annual financial statement at the cost stipulated in the separation agreement, which was signed and became effective on 31 March 2023.

**CHILDLINE WESTERN CAPE
FINANCIAL STATEMENTS FOR THE YEAR ENDED 31 MARCH 2025**

NOTES TO THE FINANCIAL STATEMENTS

Figures in Rand	2025	2024
3. TRADE AND OTHER RECEIVABLES		
Other receivables	20	14 728
Rental deposits	53 113	53 113
Staff advances	1 628	553
Value-added Tax	38 457	36 881
	93 218	105 275
4. CASH AND CASH EQUIVALENTS		
Cash and cash equivalents consist of:		
Cash on hand	4 307	5 040
Bank balances	1 887 139	2 409 414
	1 891 446	2 414 454
5. SUSTAINABILITY FUNDS		
Opening balance	97 664	194 000
Utilised during the year	-	(96 336)
Balance at year end	97 664	97 664
This reserve is utilised towards costs to keep the organisation running and functioning and has been earmarked to fund installing inverters.		
6. SEPARATION RESERVE FUNDS		
Property donated	1 715 437	1 715 437
Motor vehicle donated	158 930	158 930
Depreciation on motor vehicle	(84 980)	(71 736)
	1 789 387	1 802 631
Land and building and motor vehicles were capitalised in terms of the separation agreement between Lifeline Western Cape and Childline Western Cape signed on 31 March 2023.		
7. TRADE AND OTHER PAYABLES		
Trade payables	11 136	6 675
Accrued expense	5 543	-
Other payables	57 917	41 811
	74 596	48 486

CHILDLINE WESTERN CAPE
FINANCIAL STATEMENTS FOR THE YEAR ENDED 31 MARCH 2025

NOTES TO THE FINANCIAL STATEMENTS

Figures in Rand	2025	2024
8. PROJECT FUNDS RECEIVED IN ADVANCE		
Project funds received in advance represent funding for specific projects and outreach programmes which has been received and was unspent at the end of the year. Income is only recognised to the extent that expenditure has been incurred.		
Reconciliation of project funds:		
Anonymous Dutch Funder		
Opening balance	108 799	300 743
Funds utilised during the year	(99 999)	(191 944)
Funds received in advance at the end of the year	8 800	108 799
Department of Social Development		
Opening balance	38 154	51 147
Funds received during the year	6 729 057	6 774 107
Funds utilised during the year	(6 728 853)	(6 787 100)
Funds received in advance at the end of the year	38 358	38 154
MAID Foundation		
Opening balance	170 000	175 000
Funds received during the year	200 000	175 000
Funds utilised during the year	(170 000)	(180 000)
Funds received in advance at the end of the year	200 000	170 000
Nelson Mandela Children's Fund		
Opening balance	240 035	-
Funds received during the year	390 690	390 690
Funds utilised during the year	(479 367)	(150 655)
Funds received in advance at the end of the year	151 358	240 035
Other		
Opening balance	189 814	172 752
Other funds received during the year	93 000	50 000
Funds utilised during the year	(143 000)	(32 938)
Funds received in advance at the end of the year	139 814	189 814
Total project funds received in advance	538 330	746 802

9. TAXATION

No provision has been made for 2025 tax as the organisation is exempt from income tax in terms of section 10(1)(cN) of the Income Tax Act.

CHILDLINE WESTERN CAPE
FINANCIAL STATEMENTS FOR THE YEAR ENDED 31 MARCH 2025

NOTES TO THE FINANCIAL STATEMENTS

Figures in Rand	2025	2024
10. CASH (USED IN) GENERATED FROM OPERATIONS		
Net (deficit) surplus before taxation	(393 219)	321 807
Adjustments for:		
Depreciation	53 816	31 287
Investment income	(200 364)	(228 368)
Changes in working capital:		
Trade and other receivables	12 057	(32 639)
Trade and other payables	26 110	(28 416)
Project funds received in advance	(208 472)	47 160
	(710 072)	110 831

11. RENTAL COMMITMENTS

Operating leases – as lessee

Minimum lease payments due

Within one year	524 129	268 447
In second to fifth year inclusive	460 461	229 655
	984 590	498 102

Operating lease payments represent rentals payable by the organisation for certain of its office properties. Leases are negotiated for an average term of 3-5 years.

12. GOING CONCERN

The organization receives state funding from the Department of Social Development and is a beneficiary to 9 Trusts within South Africa. We are confident that the organisation is a going concern and will remain one in the year ahead.

The organisation has adequate financial resources to continue its operations for the foreseeable future and accordingly the financial statements have been prepared on a going concern basis. The board has satisfied themselves that the organisation is in a sound financial position and that it has access to sufficient cash resources to meet its foreseeable cash requirements. The board are not aware of any new material changes that may adversely impact the organisation. The board is also not aware of any material non-compliance with statutory or regulatory requirements or of any pending changes to legislation which may affect the organisation.

The financial statements have been prepared on the basis of accounting policies applicable to the going concern. This basis presumes that funds will be available to finance future operations and that the realisation of assets and settlement of liabilities, contingent obligations and commitments will occur in the ordinary course of business.

CHILDLINE WESTERN CAPE
FINANCIAL STATEMENTS FOR THE YEAR ENDED 31 MARCH 2025

MAJOR DONATIONS

Figures in Rand	2025	2024
State funding		
Department of Social Development	6 729 057	6 774 107
Organisations		
Inner Wheel of Durbanville	-	1 500
Childline South Africa	66 356	128 936
Kapditwala Business	1 500	-
Mason Complete Office Solutions	4 987	-
Corporate Social Investment		
Grandslots CSI	93 000	50 000
Trusts and Foundations		
David Graaff Foundation	45 000	40 000
Diane Kaplan Charity Trust	5 400	6 100
E R Tonnessen Trust	74 150	71 350
J E T Lee Will Trust	12 000	12 000
Joan St Leger Lindbergh Charitable Trust	280 000	-
Kurt and Joey Strauss Foundation	-	5 000
Lorenzo & Stella Chaippini Trust	30 000	-
MAID Foundation	200 000	175 000
Nelson Mandela Children's Fund	390 690	390 690
Rolf-Stephan Nussbaum Foundation	83 000	160 000
Miscellaneous Donations		
Andrew Ndirwo	-	100
Fuad Dollie	1 900	-
Hose Manufacturers	-	5 000
Jelly Beanz	-	870
Lindsay Crawford	-	2 000
Louise VD Linde	29 091	5 795
Rose Zigana	-	300
Shoprite Checkers	828	-
U Kyriacos	-	300

The supplementary information presented does not form part of the annual financial statements and is unaudited

